

# TSC Ferrite International

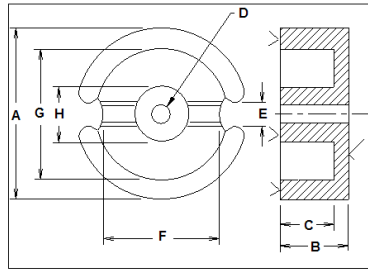


FIGURE 1

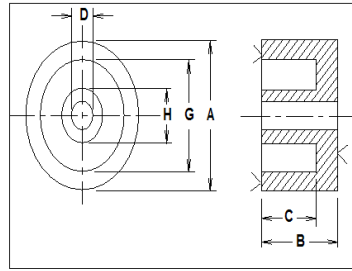


FIGURE 2

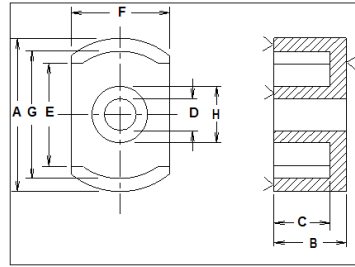


FIGURE 3

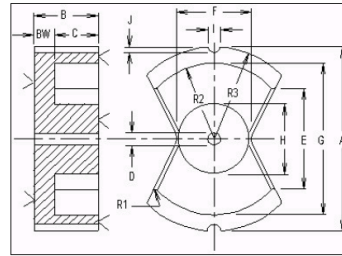


FIGURE 4

## TSC FERRITE INTERNATIONAL POT CORE DIMENSIONS

PART #	Figure	A		B		C		D		E		F		G		H	
		in	mm	in	mm	in	mm	in	mm	in	mm	in	mm	in	mm	in	mm
14-08-00	#1	0.551	14.00	0.165	4.19	0.114	2.90	0.122	3.10	0.120	3.05	0.376	9.60	0.465	11.81	0.232	5.89
		+0.008	+0.20	+0.003	+0.08	+0.004	+0.10	+0.003	+0.07	MIN	MIN	NOM	NOM	+0.008	+0.20	+0.004	+0.10
14-09-08	#3	0.551	14.00	0.165	4.19	0.114	2.90	0.122	3.10	0.300	7.67	0.370	9.40	0.465	11.81	0.232	5.89
		+0.008	+0.20	+0.003	+0.08	+0.004	+0.10	+0.003	+0.07	MIN	MIN	+0.008	+0.20	+0.008	+0.20	+0.004	+0.10
18-11-00	#1	0.709	18.00	0.208	5.28	0.146	3.71	0.122	3.10	0.142	3.60	0.503	12.78	0.598	15.20	0.293	7.44
		+0.012	+0.30	+0.003	+0.08	+0.004	+0.10	+0.003	+0.08	MIN	MIN	NOM	NOM	+0.010	+0.25	+0.006	+0.15
18-11-11	#3	0.709	18.00	0.208	5.28	0.146	3.71	0.122	3.10	0.413	10.50	0.470	11.94	0.598	15.20	0.293	7.44
		+0.012	+0.30	+0.003	+0.08	+0.004	+0.10	+0.003	+0.08	MIN	MIN	+0.008	+0.20	+0.010	+0.25	+0.006	+0.15
22-13-00	#1	0.851	21.62	0.264	6.71	0.185	4.70	0.179	4.55	0.116	2.94	0.590	15.00	0.717	18.21	0.364	9.25
		+0.015	+0.38	+0.004	+0.10	+0.004	+0.10	+0.004	+0.10	MIN	MIN	NOM	NOM	+0.012	+0.30	+0.006	+0.15
23-11-00	#2	0.900	22.86	0.218	5.54	0.148	3.76	0.200	5.08					0.720	18.29	0.382	9.70
		+0.018	+0.46	+0.005	+0.13	+0.005	+0.13	+0.004	+0.10					+0.014	+0.36	+0.008	+0.20
23-13-11	#3	0.900	22.86	0.218	5.54	0.148	3.76	0.200	5.08	0.52	13.21	0.600	15.24	0.720	18.29	0.382	9.70
		+0.018	+0.46	+0.005	+0.13	+0.005	+0.13	+0.004	+0.10	MIN	MIN	+0.010	+0.25	+0.014	+0.36	+0.008	+0.20
23-18-00	#2	0.900	22.86	0.355	9.02	0.285	7.24	0.200	5.08					0.720	18.29	0.382	9.70
		+0.018	+0.46	+0.007	+0.18	+0.007	+0.18	+0.004	+0.10					+0.014	+0.36	+0.008	+0.20
23-13-18	#3	0.900	22.86	0.355	9.02	0.285	7.24	0.200	5.08	0.52	13.21	0.600	15.24	0.720	18.29	0.382	9.70
		+0.018	+0.46	+0.007	+0.18	+0.007	+0.18	+0.004	+0.10	MIN	MIN	+0.010	+0.25	+0.014	+0.36	+0.008	+0.20
26-16-00	#1	1.004	25.50	0.317	8.05	0.220	5.59	0.219	5.56	0.162	4.11	0.710	18.03	0.850	21.60	0.443	11.25
		+0.020	+0.51	+0.004	+0.10	+0.004	+0.10	+0.004	+0.10	MIN	MIN	NOM	NOM	+0.016	+0.41	+0.008	+0.20
30-19-00	#1	1.181	30.00	0.370	9.40	0.260	6.60	0.219	5.56	0.157	3.90	0.874	22.20	1.000	25.40	0.524	13.31
		+0.020	+0.50	+0.004	+0.10	+0.004	+0.10	+0.004	+0.10	MIN	MIN	NOM	NOM	+0.016	+0.41	+0.008	+0.20
36-22-00	#1	1.402	35.61	0.428	10.87	0.291	7.39	0.219	5.56	0.169	4.30	1.055	26.80	1.197	30.40	0.626	15.90
		+0.020	+0.51	+0.006	+0.15	+0.004	+0.10	+0.004	+0.10	MIN	MIN	NOM	NOM	+0.020	+0.51	+0.012	+0.30
62-49-00	#4	2.402	61.01	0.960	24.38	0.665	16.89	0.216	5.49	1.185	30.10	1.098	27.89	1.950	49.53	0.988	25.10
		+0.048	+1.22	+0.005	+0.13	+0.011	+0.28	+0.004	+0.10	+0.024	+0.61	+0.024	+0.61	+0.039	+0.99	+0.020	+0.51
74-59-00	#4	2.864	72.75	1.156	29.36	0.809	20.55	0.219	5.56	1.366	34.70	1.250	31.75	2.299	58.39	1.142	29.01
		+0.057	+1.45	+0.005	+0.13	+0.012	+0.30	+0.004	+0.10	+0.027	+0.69	+0.025	+0.64	+0.046	+1.17	+0.023	+0.58

# TSC Ferrite International

							INDUCTANCE INDEX		
							AL		
							nH/N <sup>2</sup>		
							ASTM Material Type		
							ASTM P7099	ASTM P7070	ASTM P8040
							ASTM P5099		P5025-100
TSC FERRITE INTERNATIONAL POT CORE EFFECTIVE CORE SET PARAMETERS							TSC Ferrite Material Grade		
	MAGNETIC PATH LENGTH	EFFECTIVE CORE AREA	EFFECTIVE CORE VOLUME	WINDOW AREA	POWER HANDLING CAPABILITY INDEX	CORE SET WEIGHT	TSF-BOOST TSF-7099		TSF-8040 TSF-50ALL
PART #	Le cm	Ae cm <sup>2</sup>	Ve cm <sup>3</sup>	Wa cm <sup>2</sup>	WaAe cm <sup>4</sup>	GRAMS	TSF-5099 +/-25%	TSF-7070 +/-20%	Flat Line +/-25%
14-08-00	1.98	0.25	0.50	0.17	0.04	3.3	2,100	2,350	2,540
14-09-08	2.25	0.22	0.50	0.17	0.04	2.5	1,625	1,820	1,965
18-11-00	2.59	0.43	1.11	0.29	0.12	7.1	3,125	3,440	4,120
18-11-11	2.72	0.41	1.11	0.29	0.12	6.0	2,840	3,120	3,740
22-13-00	3.13	0.64	2.00	0.42	0.27	13.3	3,805	4,230	5,050
23-11-00									
23-13-11	3.02	0.66	2.00	0.32	0.21	11.5	4,075	4,530	6,040
23-18-00									
23-13-18	4.24	0.66	2.75	0.62	0.41	16.5	2,900	3,220	4,300
26-16-00	3.77	0.93	3.50	0.58	0.54	22.3	5,670	6,300	6,795
30-19-00	4.52	1.36	6.15	0.80	1.09	36.9	6,915	7,685	9,190
36-22-00	5.21	1.99	10.34	1.07	2.13	61.8	8,785	9,760	11,660
62-49-00	10.9	5.7	62.0	4.1	23.5	280.0	8,280	9,200	11,040
74-59-00	12.8	7.9	101.0	6.4	50.6	460.0	9,000	10,000	12,000