

FIGURE 1

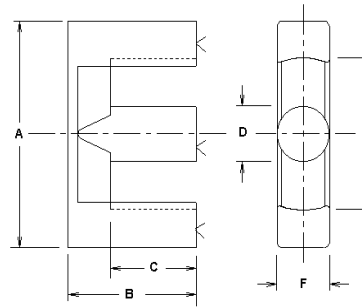


FIGURE 2

TSC FERRITE INTERNATIONAL LPE, LPPQ & LPETD CORE DIMENSIONS

PART #	Figure	A		B		C		D		E		F		G		H	
		in	mm	in	mm	in	mm	in	mm	in	mm	in	mm	in	mm	in	mm
20-14-14	#1	0.837 +/-0.016	21.26 +0.40	0.266 +/-0.005	6.76 +0.13	0.150 +/-0.005	3.81 +/-0.13	0.158 MIN	4.01 MIN	0.472 MIN	11.99 MIN	0.551 +/-0.016	14.00 +/-0.40	0.709 +/-0.016	18.01 +0.40	0.348 +/-0.008	8.84 +0.20
26-16-19	#1	1.073 +/-0.021	27.25 +/-0.53	0.321 +/-0.005	8.15 +0.13	0.150 +/-0.005	3.81 +/-0.13	0.236 MIN	5.99 MIN	0.610 MIN	15.49 MIN	0.748 +/-0.018	19.00 +/-0.45	0.886 +/-0.018	22.50 +0.45	0.472 +/-0.008	11.99 +0.20
32-17-22	#1	1.300 +/-0.026	33.02 +/-0.66	0.329 +/-0.005	8.35 +0.13	0.150 +/-0.005	3.81 +/-0.13	0.216 MIN	5.49 MIN	0.748 MIN	19.00 MIN	0.866 +/-0.020	22.00 +/-0.50	1.083 +/-0.020	27.51 +0.50	0.530 +/-0.010	13.46 +0.25
35-17-26	#1	1.422 +/-0.028	36.12 +/-0.71	0.342 +/-0.005	8.69 +0.13	0.150 +/-0.005	3.81 +/-0.13	0.235 MIN	5.97 MIN	0.925 MIN	23.50 MIN	1.024 +/-0.020	26.01 +/-0.50	1.260 +/-0.020	32.00 +0.50	0.565 +/-0.010	14.35 +0.25
40-18-28	#1	1.633 +/-0.035	41.48 +/-0.90	0.351 +/-0.010	8.92 +0.25	0.150 +/-0.010	3.81 +/-0.25	0.250 MIN	6.35 MIN	1.102 MIN	27.99 MIN	1.102 +/-0.024	27.99 +/-0.60	1.457 +/-0.024	37.01 +0.60	0.587 +/-0.012	14.91 +0.30
34-09-11	#2	1.347 +/-0.027	34.21 +/-0.69	0.355 +/-0.005	9.02 +0.13	0.150 +/-0.005	3.81 +/-0.13	0.425 +/-0.012	10.80 +0.30	1.036 +/-0.027	26.31 +0.69	0.425 +/-0.012	10.80 +0.30				
39-09-13	#2	1.539 +/-0.031	39.09 +/-0.79	0.354 +/-0.005	8.99 +0.13	0.150 +/-0.005	3.81 +/-0.13	0.492 +/-0.012	12.50 +0.30	1.185 +/-0.031	30.10 +0.79	0.492 +/-0.012	12.50 +0.30				
44-10-15	#2	1.732 +/-0.035	43.99 +/-0.89	0.378 +/-0.005	9.60 +0.13	0.150 +/-0.005	3.81 +/-0.13	0.583 +/-0.015	14.81 +0.38	1.311 +/-0.032	33.30 +0.81	0.583 +/-0.015	14.81 +0.38				
49-10-16	#2	1.917 +/-0.043	48.69 +/-1.09	0.410 +/-0.005	10.41 +0.13	0.150 +/-0.005	3.81 +/-0.13	0.642 +/-0.015	16.31 +0.38	1.457 +/-0.035	37.01 +0.89	0.642 +/-0.015	16.31 +0.38				

INDUCTANCE INDEX

AL
nH/N^2

ASTM Material Type

ASTM P7099	ASTM P7070	ASTM P8040
ASTM P5080		ASTM F3000

TSC FERRITE INTERNATIONAL LP CORE EFFECTIVE CORE SET PARAMETERS

MAGNETIC PATH LENGTH	EFFECTIVE CORE AREA	EFFECTIVE CORE VOLUME	WINDOW AREA	POWER HANDLING CAPABILITY INDEX	CORE SET WEIGHT
----------------------	---------------------	-----------------------	-------------	---------------------------------	-----------------

TSC Ferrite Material Grade		
TSF-BOOST		TSF-8040
TSF-7099		TSF-50ALL
TSF-5099	TSF-7070	Flat Line
+/-25%	+/-20%	+25%

PART #	Figure	Le cm	Ae cm^2	Ve cm^3	Wa cm^2	WaAe cm^4	GRAMS	TSF-BOOST TSF-7099 TSF-5099 +/-25%	TSF-7070 +/-20%	TSF-8040 TSF-50ALL Flat Line +25%
20-14-14	#1	3.20	0.62	1.98	0.13	0.08	12.5	2,732	4,285	6,591
26-16-19	#1	3.85	1.19	4.59	0.15	0.17	28.0	4,447	6,975	10,656
32-17-22	#1	4.77	1.70	8.12	0.23	0.38	39.4	5,132	8,050	12,313
35-17-26	#1	5.31	1.96	10.42	0.37	0.72	44.9	5,460	8,565	12,759
40-18-28	#1	5.81	2.01	11.69	0.52	1.05	63.5	5,412	8,490	11,948
34-09-11	#2	4.65	0.97	4.52	0.59	0.57	32.7	3,341	5,240	7,118
39-09-13	#2	5.03	1.20	6.28	0.67	0.80	46.3	3,981	6,245	8,177
44-10-15	#2	5.40	1.73	9.34	0.70	1.21	72.1	5,132	8,050	11,052
49-10-16	#2	5.85	2.11	12.37	0.79	1.67	95.0	5,779	9,065	12,464