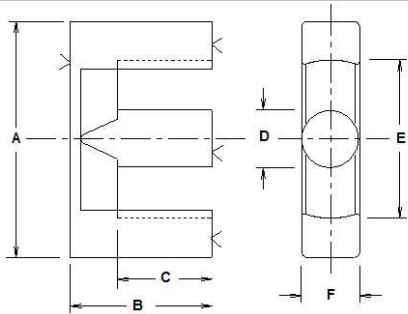


TSC Ferrite International



TSC FERRITE INTERNATIONAL ETD & EER CORE DIMENSIONS

PART #	A		B		C		D		E		F		
	in	mm	in	mm	in	mm	in	mm	in	mm	in	mm	
20-10-08	0.787 +/-0.016	19.99 +/-0.40	0.396 +/-0.005	10.06 +/-0.13	0.278 +/-0.007	7.06 +/-0.19	0.300 +/-0.006	7.62 +/-0.15	0.551 +/-0.011	14.00 +/-0.28	0.300 +/-0.006	7.62 +/-0.15	
20-13-08	0.787 +/-0.016	19.99 +/-0.40	0.527 +/-0.005	13.39 +/-0.13	0.409 +/-0.007	10.39 +/-0.19	0.300 +/-0.006	7.62 +/-0.15	0.551 +/-0.011	14.00 +/-0.28	0.300 +/-0.006	7.62 +/-0.15	
ETD29	29-00-00	1.178 +/-0.024	29.92 +/-0.61	0.622 +/-0.008	15.80 +/-0.20	0.432 +/-0.011	10.97 +/-0.28	0.374 +/-0.012	9.50 +/-0.30	0.890 +/-0.024	22.61 +/-0.61	0.374 +/-0.012	9.50 +/-0.30
EER28	29-14-11	1.124 +/-0.022	28.55 +/-0.57	0.551 +/-0.005	14.00 +/-0.13	0.380 +/-0.008	9.65 +/-0.21	0.390 +/-0.008	9.91 +/-0.20	0.852 +/-0.017	21.64 +/-0.43	0.449 +/-0.010	11.40 +/-0.25
EER28L	29-17-11	1.124 +/-0.022	28.55 +/-0.57	0.665 +/-0.005	16.89 +/-0.13	0.493 +/-0.008	12.52 +/-0.21	0.390 +/-0.008	9.91 +/-0.20	0.852 +/-0.017	21.64 +/-0.43	0.449 +/-0.010	11.40 +/-0.25
ETD34	34-00-00	1.347 +/-0.027	34.21 +/-0.69	0.681 +/-0.008	17.30 +/-0.20	0.476 +/-0.011	12.09 +/-0.28	0.425 +/-0.012	10.80 +/-0.30	1.036 +/-0.027	26.31 +/-0.69	0.425 +/-0.012	10.80 +/-0.30
EER35	35-21-11	1.378 +/-0.028	35.00 +/-0.70	0.835 +/-0.005	21.21 +/-0.13	0.610 +/-0.010	15.49 +/-0.24	0.445 +/-0.009	11.30 +/-0.23	1.039 +/-0.021	26.39 +/-0.53	0.445 +/-0.009	11.30 +/-0.23
ETD39	39-00-00	1.539 +/-0.031	39.09 +/-0.79	0.779 +/-0.008	19.79 +/-0.20	0.575 +/-0.015	14.61 +/-0.38	0.492 +/-0.012	12.50 +/-0.30	1.185 +/-0.031	30.10 +/-0.79	0.492 +/-0.012	12.50 +/-0.30
ETD44	44-00-00	1.732 +/-0.035	43.99 +/-0.89	0.878 +/-0.008	22.30 +/-0.20	0.650 +/-0.015	16.51 +/-0.38	0.583 +/-0.015	14.81 +/-0.38	1.311 +/-0.032	33.30 +/-0.81	0.583 +/-0.015	14.81 +/-0.38
ETD49	49-00-00	1.917 +/-0.043	48.69 +/-1.09	0.972 +/-0.008	24.69 +/-0.20	0.712 +/-0.016	18.08 +/-0.41	0.642 +/-0.015	16.31 +/-0.38	1.457 +/-0.035	37.01 +/-0.89	0.642 +/-0.015	16.31 +/-0.38
ETD59	59-00-00	2.355 +/-0.047	59.82 +/-1.20	1.221 +/-0.005	31.01 +/-0.13	0.886 +/-0.012	22.50 +/-0.30	0.853 +/-0.017	21.67 +/-0.43	1.760 +/-0.035	44.70 +/-0.89	0.863 +/-0.017	21.92 +/-0.44

TSC Ferrite International

							INDUCTANCE INDEX		
							AL nH/N ²		
							ASTM Material Type		
TSF FERRITE INTERNATIONAL ETD & EER CORE EFFECTIVE CORE SET PARAMETERS							ASTM P7099 ASTM P5099	ASTM P7070	ASTM P8040 ASTM F3000 P5025-100
PART #	MAGNETIC PATH LENGTH	EFFECTIVE CORE AREA	EFFECTIVE CORE VOLUME	WINDOW AREA	POWER HANDLING CAPABILITY INDEX	CORE SET WEIGHT	TSF-BOOST TSF-7099 TSF-5099	TSF-7070	TSF-8040 TSF-50ALL Flat Line
	Le cm	Ae cm ²	Ve cm ³	Wa cm ²	WaAe cm ⁴	GRAMS	+25%	+20%	+25%
20-10-08	4.484	0.456	2.047	0.444	0.203	11.4	2,470	2,750	3,475
20-13-08	5.856	0.456	2.673	0.662	0.302	14.8	1,880	2,090	2,650
29-00-00	7.200	0.760	5.50	1.438	1.093	15.0	2,580	2,850	3,610
29-14-11	6.355	0.867	5.567	1.133	0.992	35.1	3,380	3,760	4,760
29-17-11	7.494	0.867	6.495	1.469	1.273	41.1	2,835	3,150	3,985
34-00-00	7.976	0.973	7.770	1.876	1.826	39.7	2,310	3,210	4,070
35-21-11	9.381	1.044	9.793	2.338	2.440	55.5	2,730	3,034	3,842
39-00-00	9.350	1.249	11.702	2.571	3.211	58.5	3,170	3,520	4,460
44-00-00	10.475	1.732	18.112	3.053	5.288	90.8	3,250	4,360	5,520
49-00-00	11.562	2.114	24.467	3.744	7.914	122.4	4,340	4,825	6,110
59-00-00	14.212	3.545	50.382	5.185	18.379	283.0	6,160	6,840	8,665