

UPDATING    UPDATING    UPDATING    UPDATING    UPDATING    UPDATING

**Finishing Spec Core**

Catalog No. **8040-18-11-00-0001**

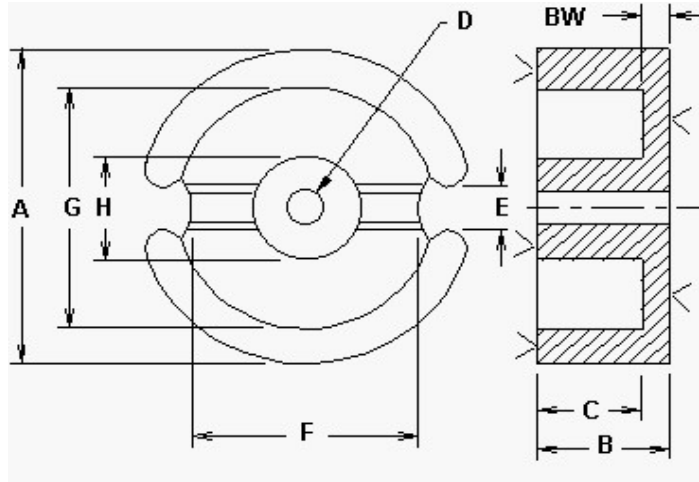
**181100    POT**

Rev Level **A**

Picture

**1ST ISSUED** 4-Oct-07

Customer	Customer Part #



REQUIRED GRINDER BELT SPEED			
GRINDER	UPDATED	M/MIN	INCH/MIN
1	0	0.00	0.00
2	0	0.00	0.00
3	0	0.00	0.00
4	0	0.00	0.00
5	0	0.00	0.00

Gapping Wheel Dimension (Inch)	
Minimum	Maximum

**GRIND SPECS**

	B	C	BW	GRIND BACKWALL	GRIND MATING SURFACE	GAP DEPTH per pc. (inches)	AL VALUE nH/T*2	L CONTROL LIMIT mH
	inches	inches	inches					
Maximum	0.2130	0.1500	0.0660				340.2	0.40131
Nominal	0.2080	0.1460	0.0620	YES	YES	0.0060	315.0	0.38588
Minimum	0.2030	0.1420	0.0580				289.8	0.37044

L @ DC 1 mH min	L @ DC 2 mH min
ADC (AMPS)	ADC (AMPS)

Inductance (AL) Test Conditions mate with: <b>8040-18-11-00-0000</b>								
Critical Spec. Al or Mech.	Tolerance	1 or 2 core GAP	Coil #	# Turns	Test Frequency	Test Voltage	Test Flux Density	Grinding PCS/HR
					kHz	Vrms	Gauss	
AL	8%	ONE	942	35	1	0.100	5	

APPROVED FOR PRODUCTION \_\_\_\_\_ DATE \_\_\_\_\_

**Comments**  
Use Gauge #056 even though max A and min G dim is incorrect - per George 23Jan07

Dimensions:	A	D	E	F	G	H	J	COLOR CODE
	inches	inches	inches	inches	inches	inches	inches	
Maximum	0.723	0.125			0.608	0.299		
Nominal	0.709	0.122		0.503	0.598	0.293		
Minimum	0.695	0.119	0.142		0.588	0.287		

<b>Packaging Comments</b>										
Package so the outer slots do NOT interconnect										
<b>Packaging</b>										
Method	Die Cut	Type of Box or Bag	pcs/bag or pcs/cell or # rows per board	# columns per board	Pieces / Board	Layers	Spacer Boards	Foam	Pcs/Box	WEIGHT OF BOX APPROX
SKIN	P4400	4400C	10	9	90	10	2	1	900	12.3