

UPDATING UPDATING UPDATING UPDATING UPDATING UPDATING

Finishing Spec Core

Catalog No. **7070-44-00-00-0011**

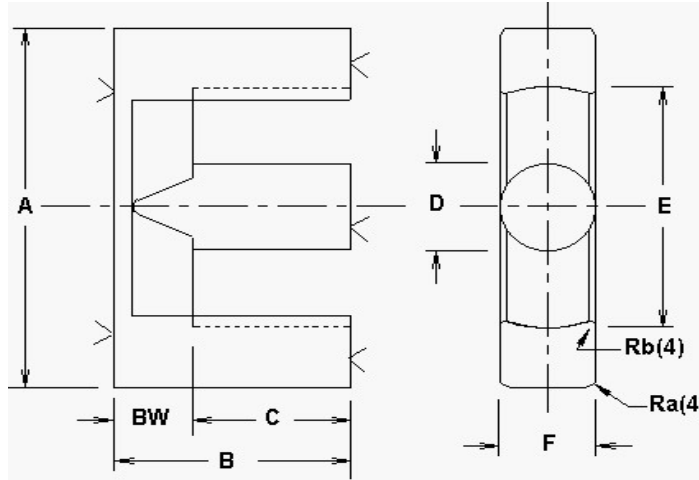
440000 ETD

Rev Level **B**

Picture

1ST ISSUED

Customer	Customer Part #



REQUIRED GRINDER BELT SPEED			
GRINDER	UPDATED	M/MIN	INCH/MIN
1	0	0.00	0.00
2	0	0.00	0.00
3	0	0.00	0.00
4	0	0.00	0.00
5	0	0.00	0.00

Gapping Wheel Dimension (Inch)	
Minimum	Maximum
0.852	1.042

GRIND SPECS

	B	C	BW	GRIND BACKWALL	GRIND MATING SURFACE	GAP DEPTH per pc. (inches)	AL VALUE nH/T*2	L CONTROL LIMIT mH
	inches	inches	inches					
Maximum	0.8860	0.6650	0.2360				180.6	1.76300
Nominal	0.8780	0.6500	0.2280	YES	YES	0.0363	172.0	1.72000
Minimum	0.8700	0.6350	0.2200				163.4	1.67700

L @ DC 1	L @ DC 2
mH min	mH min
ADC (AMPS)	ADC (AMPS)

Inductance (AL) Test Conditions mate with:								Grinding PCS/HR
Critical Spec. Al or Mech.	Tolerance	1 or 2 core GAP	Coil #	# Turns	Test Frequency kHz	Test Voltage Vrms	Test Flux Density Gauss	
AL	5%	TWO	430	100	10	0.370	5	

APPROVED FOR PRODUCTION _____ DATE _____

Comments
Use gauge #037

Dimensions:	A	D	E	F	G	H	J	COLOR CODE
	inches	inches	inches	inches	inches	inches	inches	
Maximum	1.767	0.598	1.343	0.598				
Nominal	1.732	0.583	1.311	0.583				
Minimum	1.697	0.568	1.279	0.568				

Packaging Comments
Lay cores on their side

Packaging										
Method	Die Cut	Type of Box or Bag	pcs/bag or pcs/cell or # rows per board	# columns per board	Pieces / Board	Layers	Spacer Boards	Foam	Pcs/Box	WEIGHT OF BOX APPROX
SKIN	P4400	4400C	8	5	40	5	A/R	A/R	200	20.0