

UPDATING UPDATING UPDATING UPDATING UPDATING UPDATING

Finishing Spec Core

Catalog No. **7070-29-18-11-0000**

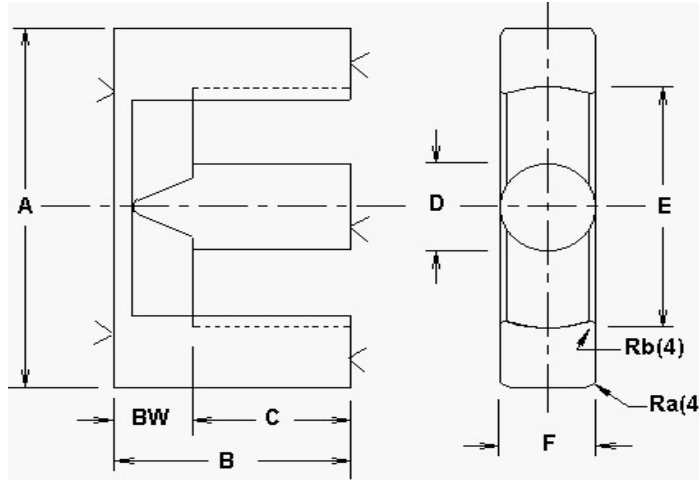
291811 ETD

Rev Level **A**

Picture

1ST ISSUED 11/01/06

Customer	Customer Part #



REQUIRED GRINDER BELT SPEED			
GRINDER	UPDATED	M/MIN	INCH/MIN
1	0	0.00	0.00
2	0	0.00	0.00
3	0	0.00	0.00
4	0	0.00	0.00
5	0	0.00	0.00

GRIND SPECS

	B	C	BW	GRIND BACKWALL	GRIND MATING SURFACE	GAP DEPTH per pc. (inches)	AL VALUE nH/T*2	L CONTROL LIMIT mH
	inches	inches	inches					
Maximum	0.6870	0.5120	0.1770				3780.0	1.38600
Nominal	0.6820	0.5070	0.1720	YES	YES		3150.0	1.26000
Minimum	0.6770	0.5020	0.1670				2520.0	1.13400

L @ DC 1	L @ DC 2
mH min	mH min
ADC (AMPS)	ADC (AMPS)

Inductance (AL) Test Conditions mate with:								Grinding PCS/HR
Critical Spec. Al or Mech.	Tolerance	1 or 2 core GAP	Coil #	# Turns	Test Frequency kHz	Test Voltage Vrms	Test Flux Density Gauss	
AL	20%	NO	566	20	10	0.040	5	

APPROVED FOR PRODUCTION _____ DATE _____

Comments
Use gauge #020

Dimensions:	A	D	E	F	G	H	J	COLOR CODE
	inches	inches	inches	inches	inches	inches	inches	
Maximum	1.146	0.398	0.869	0.458				
Nominal	1.124	0.390	0.852	0.449				
Minimum	1.102	0.382	0.835	0.440				

Packaging Comments										
Packaging										
Method	Die Cut	Type of Box or Bag	pcs/bag or pcs/cell or # rows per board	# columns per board	Pieces / Board	Layers	Spacer Boards	Foam	Pcs/Box	WEIGHT OF BOX APPROX
SKIN	P4400	4400C	15	7	105	5	3	1	525	24