

UPDATING UPDATING UPDATING UPDATING UPDATING UPDATING

Finishing Spec Core

Catalog No. **7070-29-00-00-0004**

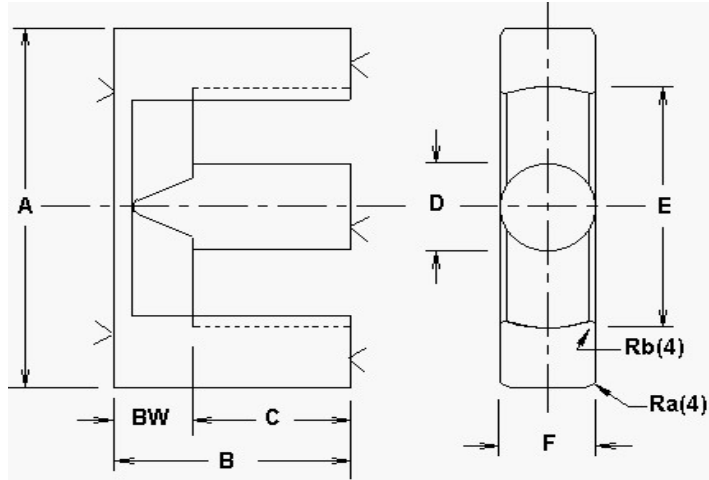
290000 ETD

Rev Level **A**

Picture

1ST ISSUED 08/15/07

Customer	Customer Part #



REQUIRED GRINDER BELT SPEED			
GRINDER	UPDATED	M/MIN	INCH/MIN
1	0	0.00	0.00
2	0	0.00	0.00
3	0	0.00	0.00
4	0	0.00	0.00
5	0	0.00	0.00

GRIND SPECS

	B	C	BW	GRIND BACKWALL	GRIND MATING SURFACE	GAP DEPTH per pc. (inches)	AL VALUE nH/T*2	L CONTROL LIMIT mH
	inches	inches	inches					
Maximum	0.6300	0.4430	0.1980			0.0110	0.0	0.00000
Nominal	0.6220	0.4320	0.1900	YES	YES	0.0100	0.0	0.00000
Minimum	0.6140	0.4210	0.1820			0.0090	0.0	0.00000

L @ DC 1	L @ DC 2
mH min	mH min
ADC (AMPS)	ADC (AMPS)

Inductance (AL) Test Conditions mate with:								Grinding PCS/HR
Critical Spec. Al or Mech.	Tolerance	1 or 2 core GAP	Coil #	# Turns	Test Frequency kHz	Test Voltage Vrms	Test Flux Density Gauss	
MECH	0.0010	EACH	0	0	0	0	0	

APPROVED FOR PRODUCTION _____ DATE _____

Comments
Use gauge #019

Dimensions:	A	D	E	F	G	H	J	COLOR CODE
	inches	inches	inches	inches	inches	inches	inches	
Maximum	1.202	0.386	0.914	0.386				
Nominal	1.178	0.374	0.890	0.374				
Minimum	1.154	0.362	0.866	0.362				

Packaging Comments										
3 groups of 2 columns with mating surface facing the board										
Packaging										
Method	Die Cut	Type of Box or Bag	pcs/bag or pcs/cell or # rows per board	# columns per board	Pieces / Board	Layers	Spacer Boards	Foam	Pcs/Box	WEIGHT OF BOX APPROX
SKIN	P4400	4400C	19	6	114	5	1	4	570	21.9