

UPDATING UPDATING UPDATING UPDATING UPDATING UPDATING

**Finishing Spec Core**

Catalog No. **5099-93-76-30-0000**

**937630**

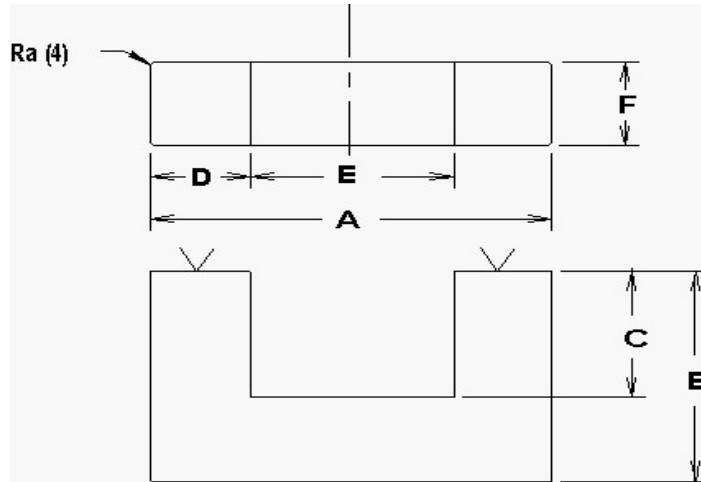
**U3**

Rev Level **D**

Picture

**1ST ISSUED** 6/10/2002

Customer	Customer Part #



REQUIRED GRINDER BELT SPEED			
GRINDER	UPDATED	M/MIN	INCH/MIN
1	0	0.00	0.00
2	0	0.00	0.00
3	0	0.00	0.00
4	0	0.00	0.00
5	0	0.00	0.00

L % #VALUE! #VALUE!  
 Lidc^2/ve #VALUE! #VALUE!  
 Hdc #VALUE! #VALUE!

**GRIND SPECS**

	B	C	BW	GRIND BACKWALL	GRIND MATING SURFACE	GAP DEPTH per pc. (inches)	AL VALUE nH/T^2	L CONTROL LIMIT mH
	inches	inches	inches					
Maximum	3.0070	1.9050					7860.0	0.72050
Nominal	2.9920	1.8900	1.1020	NO	YES		6550.0	0.65500
Minimum	2.9770	1.8750	1.0750				5240.0	0.58950

L @ DC 1	L @ DC 2
mH min	mH min
ADC (AMPS)	ADC (AMPS)

Inductance (AL) Test Conditions mate with								Grinding PCS/HR
Critical Spec. Al or Mech.	Tolerance %	1 or 2 core GAP	Coil #	# Turns	Test Frequency kHz	Test Voltage Vrms	Test Flux Density Gauss	
AL	20%	NO	801	10	10	0.190	5	

APPROVED FOR PRODUCTION \_\_\_\_\_ DATE \_\_\_\_\_

**Comments**  
 Use gauge #051

Dimensions:	A	D	E	F	G	H	J	COLOR CODE
	inches	inches	inches	inches	inches	inches	inches	
Maximum	3.732	1.122	1.486	1.201				
Nominal	3.661	1.102	1.457	1.181				White
Minimum	3.590	1.082	1.428	1.161				

Packaging Comments										
Lay flat with 1" space on all sides and edges, do not use frame										
Packaging										
Method	Die Cut	Type of Box or Bag	pcs/bag or pcs/cell or # rows per board	# columns per board	Pieces / Board	Layers	Spacer Boards	Foam	Pcs/Box	WEIGHT OF BOX APPROX